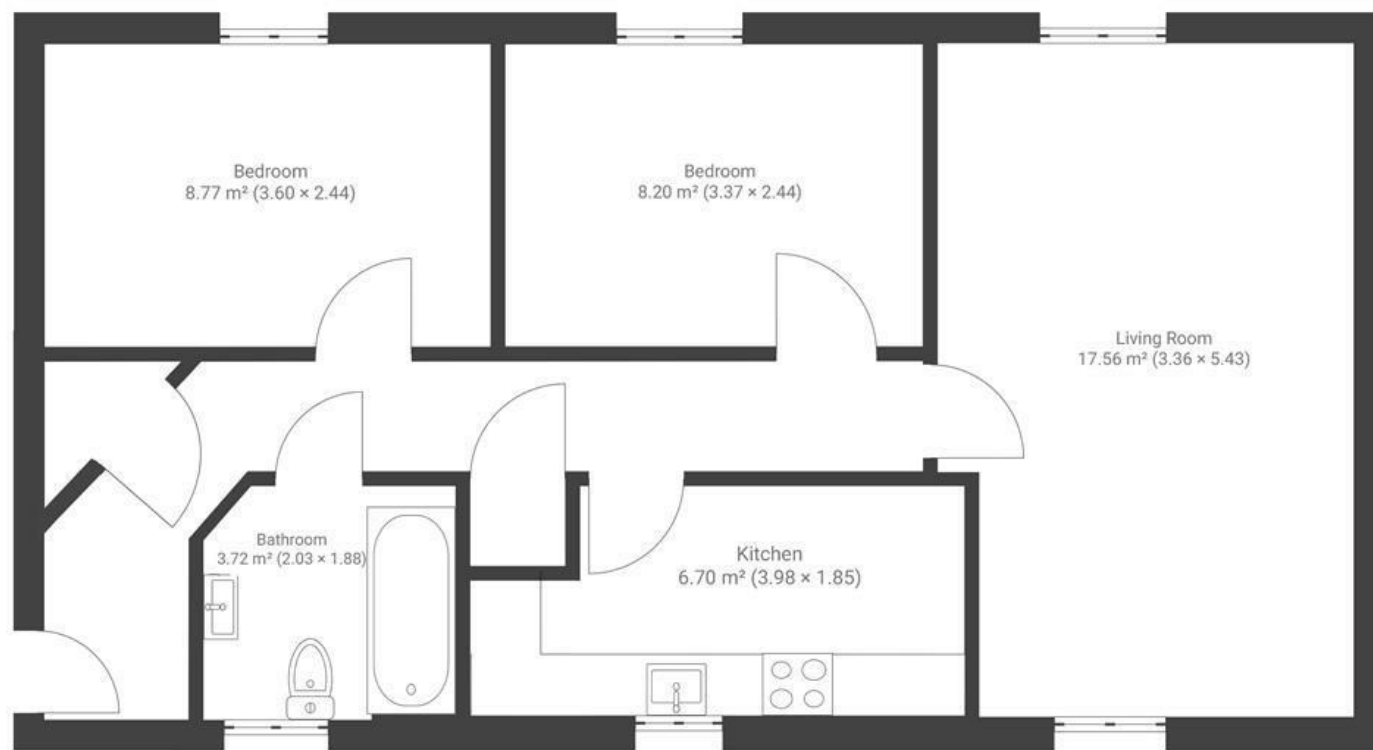


Bristol South End

BEDMINSTER

APPROXIMATE FLOOR AREA
58 SQM / 624 SQFT



FIRST FLOOR

Boardwalk

Bristol South

, BRISTOL



£270,000



2 Bedrooms



BS3 5BJ



1 Bathrooms

"Bristol South End has been an ideal first home. I've thoroughly enjoyed weekday strolls through Victoria park to access Temple meads and spending weekends walking between nearby farmers markets, looping around the harbour and bar hopping on North street. Having no one living above and below the flat makes it feel like a real retreat, that and the beautiful floors and having sunlight on both sides of the property. Having access to so much green space on the estate has really been a real luxury."

